

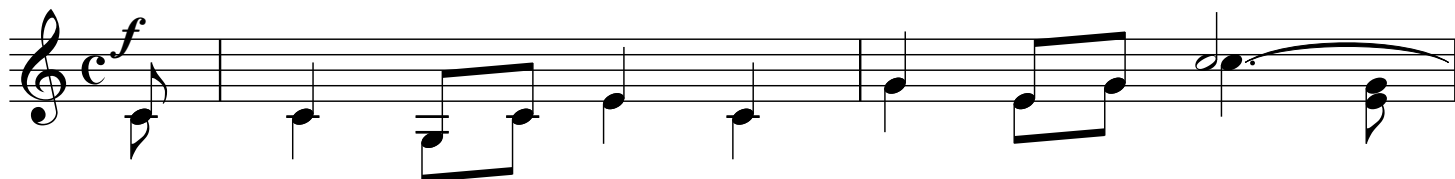
# Juhe, nus mein a fiera

T: Donat Cadruvi

M: Eduard Lombriser (1989)

♩ = 120

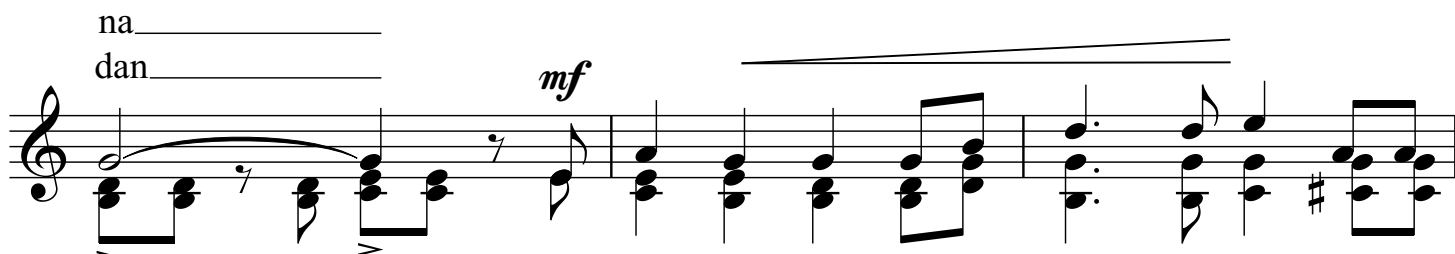
1. Quei Temps ch'igl a - tun il mei - ster pic - tur, \_\_\_\_\_  
 2. Tgei fis - sta pils purs che fan da si - gnurs, \_\_\_\_\_



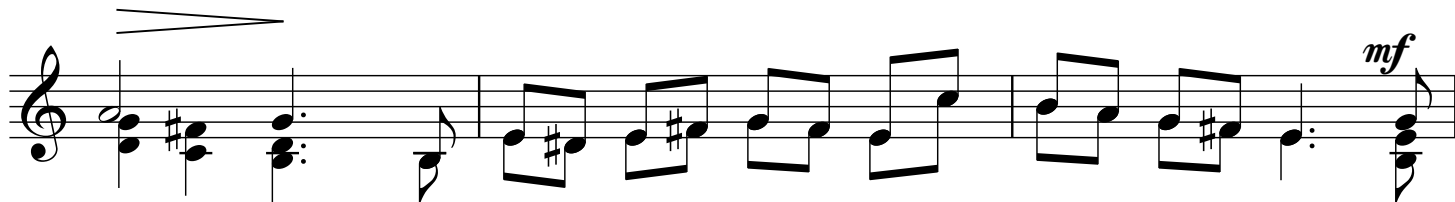
1. Quei temps ch'igl a - tun il mei - ster pic - tur, quei  
 2. Tgei fia - sta pils purs che fn da si - gnurs, tgei



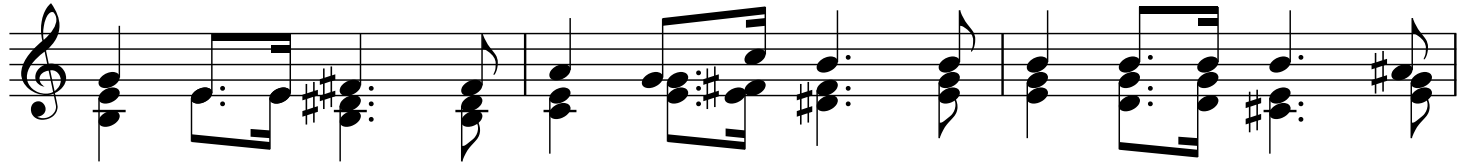
mi - na, ca - mi - na, ca - mi - na, ca -  
 ca - gau - dan, e gau - dan, e



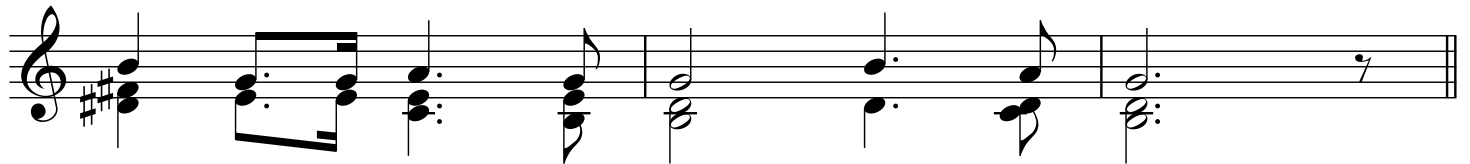
na dan  
 mi - na, ca - mi - na tral mund cun vi - va co - lur e fa - tscha ri -  
 gau - dan, e gau - dan gl'a - tun pas - sond vi sur punt da - von la pu -



en - ta. Fi - nid' ei la sten - ta, bein fatg la la - vur sil  
 gnie - ra che sburf la sin fie - ra, tscher - cond il ri - val, sch'ei

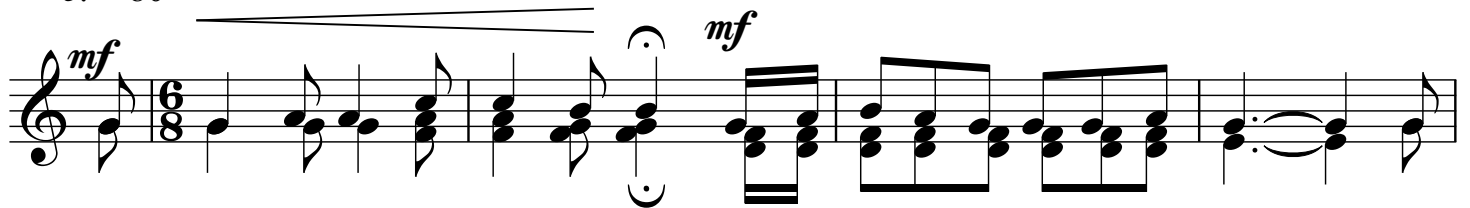


tratsch plein sa - vur, il fretg en cla - vau, nus mein a mar-cau, nus  
fuss in mi-stral! Nus mein a mar-cau, tgei fiast' e fi - rau, tgei

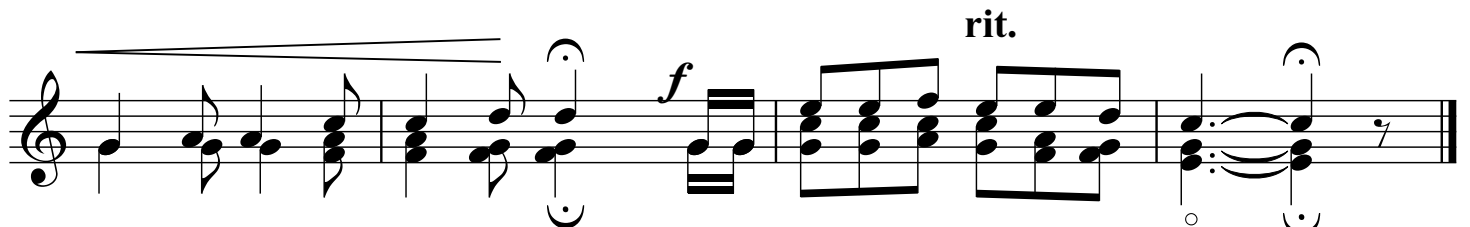


mein a mar-cau, nus mein a mar - cau!  
fiast' e - fi - rau, tgei fiast' e fi - rau!

$\text{♩} = 80$



Ju - he, ju - he, ju - he, ju - he, tgei le - gri - a, tgei le-gher cun - far. — Ju -



he, ju - he, ju - he, ju - he, tgei le - gri - a, tgei le-gher cun - far. —

**rit.**